

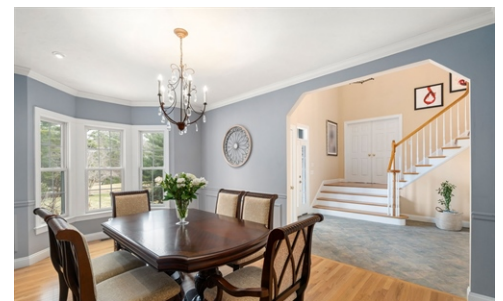
NEW PRICE-\$50K Reduction



\$ 924,900

OPEN HOUSE

4/25/2026 11:30 - 1:00



22 Mystic Valley Ln, Uxbridge, MA 01569

- » Beds: 4 | Baths: 3 Full, 1 Half
- » Single Family | 3,542 ft² | Lot: 4.02 acres
- » 2 Story Foyer
- » 2 Sided Gas Fireplace
- » Large Kitchen with Expansive Island
- » More Info: 22MysticValleyLn.com



Donna Spector

(508) 751-9735 (Cell)

Donna.Spector@SuburbanLifestyle.com

<http://www.DonnaAndSteveTeam.com>



NEW PRICE! EXCEPTIONAL VALUE. Privately set on a wooded cul-de-sac, this custom Colonial blends everyday comfort with resort-style living. Set on 4+ acres with expansive lawn, mature plantings, and irrigation, the outdoor spaces shine: featuring a wraparound deck, patio, hot tub, and heated 24-ft above-ground pool, creating your own private retreat.

Inside, natural light pours through an open, airy layout with gleaming hardwood floors throughout the first level. A striking two-sided fireplace connects the sun-filled living room, which is anchored by a dramatic wall of windows to the well-appointed kitchen, creating a seamless flow for both relaxed living and entertaining.

The kitchen offers an expansive island, gas cooktop, stainless appliances, walk-in pantry and a bright breakfast nook.

